

Generating the Search Strategy from a X-Full Search

Published 10/12/2020

1) The X-Full search has been conducted:

The screenshot displays the X-Full search interface. On the left, the 'Free Query (EPOQUE Language)' field contains the query `/IC/CC A47L15`. The central panel shows the search strategy for three concepts:

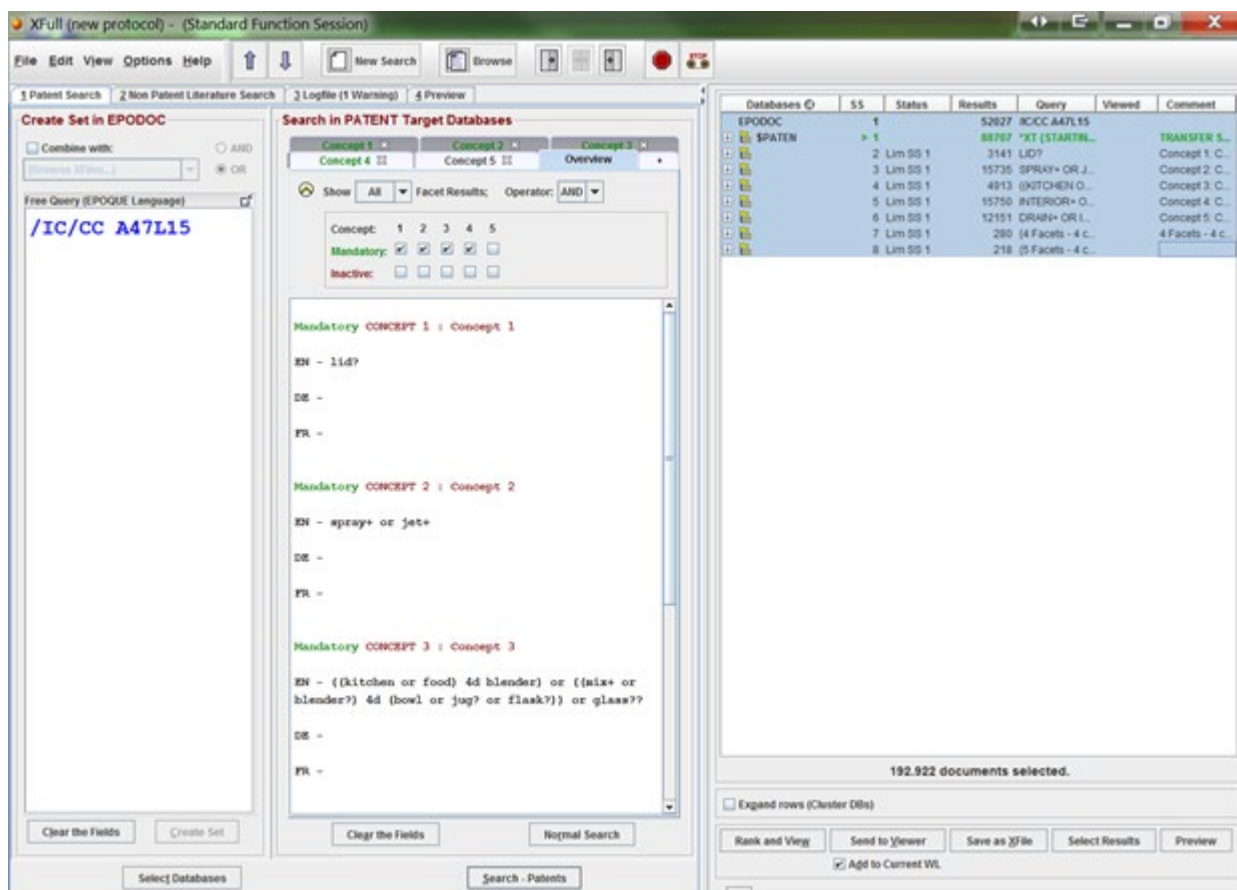
- Mandatory CONCEPT 1 : Concept 1**
EN - blender?
DE -
FR -
- Mandatory CONCEPT 2 : Concept 2**
EN - apax+ or jet+
DE -
FR -
- Mandatory CONCEPT 3 : Concept 3**
EN - ((kitchen or food) & blender) or ((mix+ or blender?) & (bowl or jug? or flask?)) or glass??
DE -
FR -

On the right, a table lists search results:

Databases	SS	Status	Results	Query	Viewed	Comment
EPODOC	1		52827	IC/CC A47L15		
SPATEN	1		88797	*XT (STARTIN...		TRANSFER S...
	2	Lim SS 1	3145	LED?		Concept 1 C...
	3	Lim SS 1	18735	SPRAY+ OR J...		Concept 2 C...
	4	Lim SS 1	4913	KNITCHEN O...		Concept 3 C...
	5	Lim SS 1	15750	INTERIOR+ O...		Concept 4 C...
	6	Lim SS 1	12151	DRAG+ OR L...		Concept 5 C...
	7	Lim SS 1	280	{4 Facets - 4 c...		4 Facets - 4 c...
	8	Lim SS 1	218	{4 Facets - 4 c...		

At the bottom, it indicates '102 Families Selected.' and 'Patent Search Search Completed: EN = 218, DE = 0, FR = 0, One Warning.'

2) Highlight ALL the search result rows in the RHS of the XFULL screen:



3) Copy them: You have to use **Ctrl + C** (You can't right click on the blue highlighted RHS stuff)

4) Paste into WORD:

EPODOC	1		52027	/IC/CC A47L15	
\$PATEN	1		88707	*XT {STARTING SET}	TRANSFER SS 1 from EPODOC
	2	Lim SS 1	3141	LID?	Concept 1: Concept 1
	3	Lim SS 1	15735	SPRAY+ OR JET+	Concept 2: Concept 2
	4	Lim SS 1	4913	((KITCHEN OR FOOD) 4D BLENDER) OR ((MIX+ OR BLENDER?) 4D	Concept 3: Concept 3

				(BOWL OR JUG? OR FLASK?)) OR GLASS??	
	5	Lim SS 1	15750	INTERIOR+ OR INSIDE+ OR (INNER 3D SURFACE??)	Concept 4: Concept 4
	6	Lim SS 1	12151	DRAIN+ OR INVERT+ OR UPSIDE_DOWN OR UP_TURN+ OR OVER_TURN+ OR FLIP+	Concept 5: Concept 5
	7	Lim SS 1	280	{4 Facets - 4 concepts mandatory} (2 AND 3 AND 4 AND 5)	4 Facets - 4 concepts mandatory
	8	Lim SS 1	218	{5 Facets - 4 concepts mandatory} 2 AND 3 AND 4 AND 5 AND 6	

5) Copy from WORD and paste into SIS

(Note: if when pasted into the SIS the 3rd column (number of hits) wraps around and the number, eg. 15750 becomes 1575 on one line and 0 on the next, then merely whilst in WORD, widen that column then re-paste into the SIS.)

6) Indicate which Search statements have been viewed.

7) Add "**\$PATEN = ALL English language databases.**" – You should have ticked "**ALL EN**" English language databases to be searched. (once you have ticked **ALL EN** it remains as the default)

Result: The SIS will look like the following:



Search Information Statement (SIS)

Application Number Example of X-FULL strategy

A. Search Details

Search Team Members (if convened):	X-FULL and X-Minor	Earlier Search Results (if available or relied on)	
		Current SIS Completion Date	

B. Search Strategy

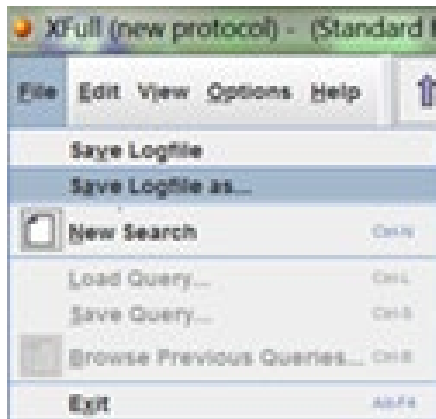
EPODOC 1	52027 /IC/CC A47L15	
SPATEN 1	88707 *XT {STARTING SET}	TRANSFER SS 1 from EPODOC
2 Lim SS 1	3141 LID?	Concept 1: Concept 1
3 Lim SS 1	15735 SPRAY+ OR JET+	Concept 2: Concept 2
4 Lim SS 1	4913 ((KITCHEN OR FOOD) 4D BLENDER) OR ((MIX+ OR BLENDER?) 4D (BOWL OR JUG? OR FLASK?)) OR GLASS??	Concept 3: Concept 3
5 Lim SS 1	15750 INTERIOR+ OR INSIDE+ OR (INNER 3D SURFACE??)	Concept 4: Concept 4
6 Lim SS 1	12151 DRAIN+ OR INVERT+ OR UPSIDE_DOWN OR UP_TURN+ OR OVER_TURN+ OR FLIP+	Concept 5: Concept 5
7 Lim SS 1	280 {4 Facets - 4 concepts mandatory} (2 AND 3 AND 4 AND 5)	4 Facets - 4 concepts mandatory
8 Lim SS 1	218 {5 Facets - 4 concepts mandatory} 2 AND 3 AND 4 AND 5 AND 6	

Viewed SS 7

\$SPATEN = ALL English language databases.

Alternative Method of Saving the Search Strategy

- 1) When the Search is complete and results are displayed in the RHS screen – as in first screen shot above.
- 2) Click on tab no. 3 “logfile”.
- 3) From the **File** menu select **Save Logfile as**



- 4) In popup box Name the file and/or add a comment.
- 5) The file can now be found at
H:\EPOQUENETDATA\EPLOGF

Note: This file will contain all the syntax checks and warning messages and will be several pages long.

This can then be copied into the SIS – preferably with the orange warning messages removed.